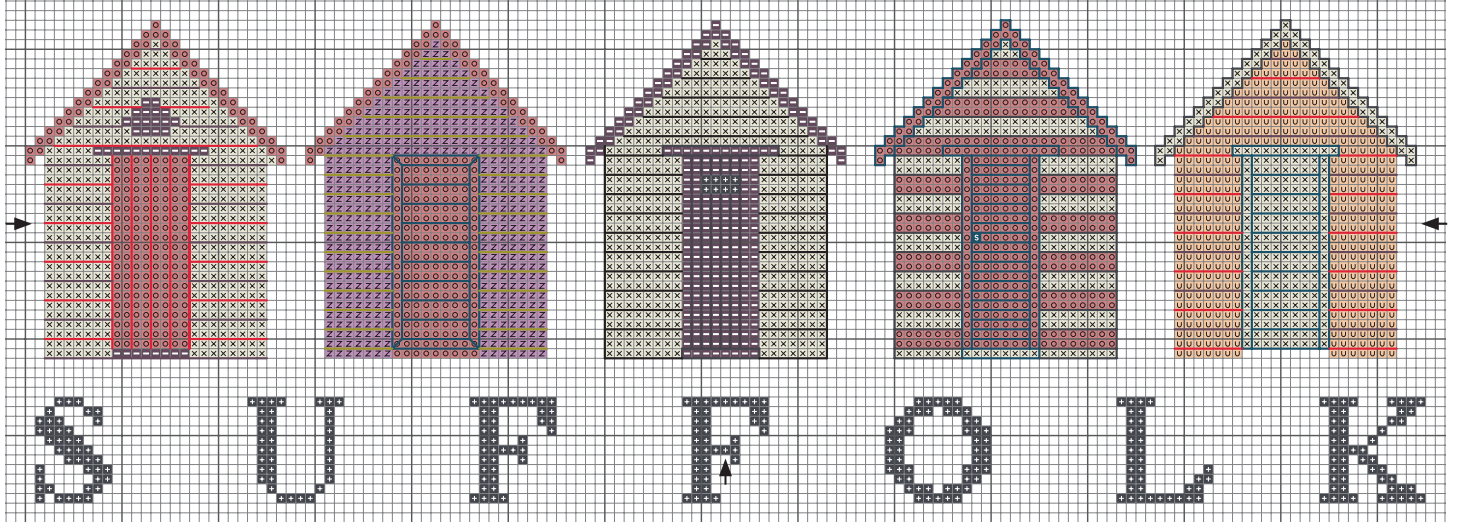


Seaside - Suffolk Beach Huts

Bord de mer - Cabines de plage de Suffolk



Colour Guide with backstitch / Guide de couleurs avec le point arrière



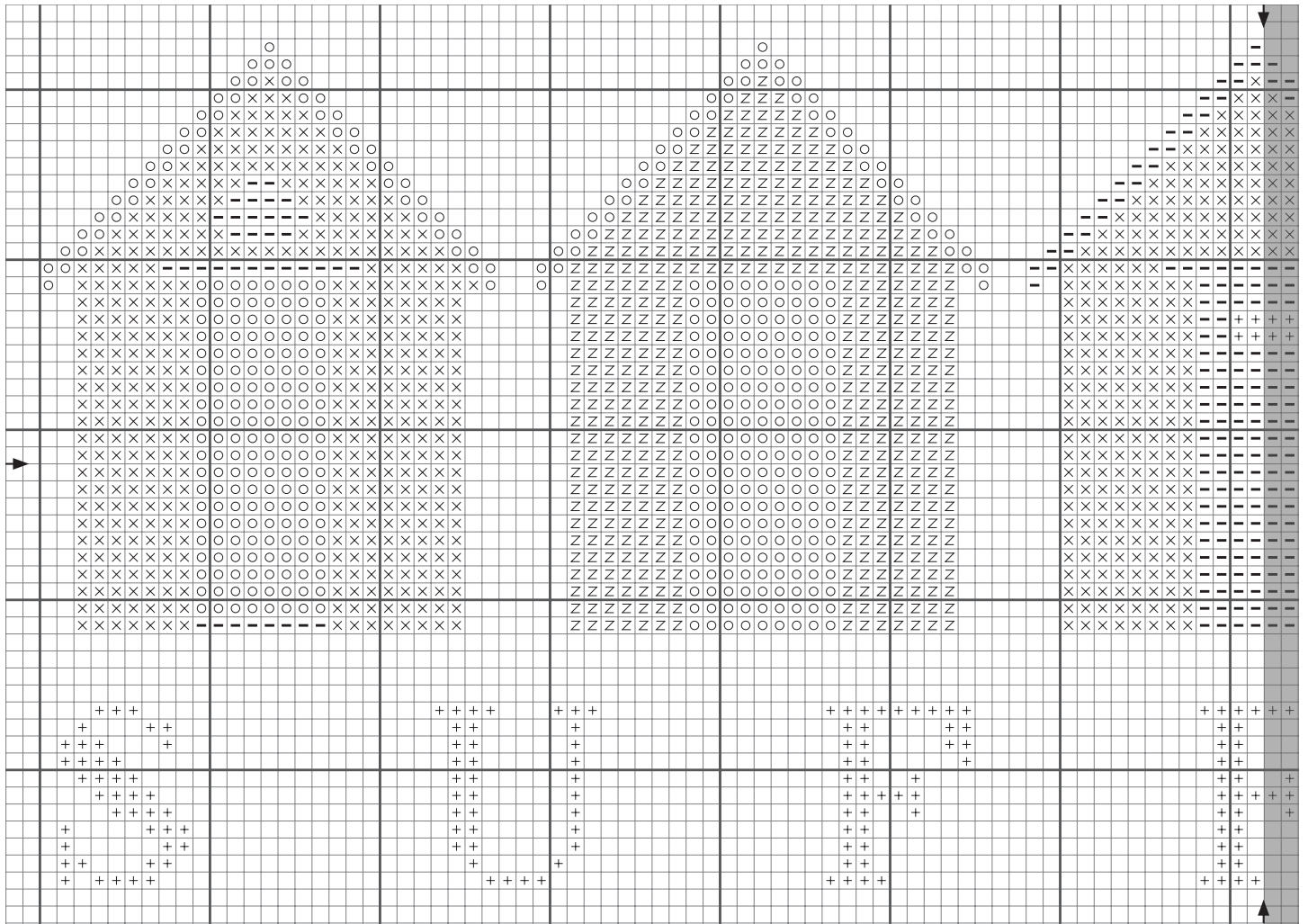
Seaside - Suffolk Beach Huts

Bord de mer - Cabines de plage de Suffolk



Technical chart without backstitch / Tableau de techniques sans le point arrière

Note: Drawing not to scale / Dessin pas à l'échelle



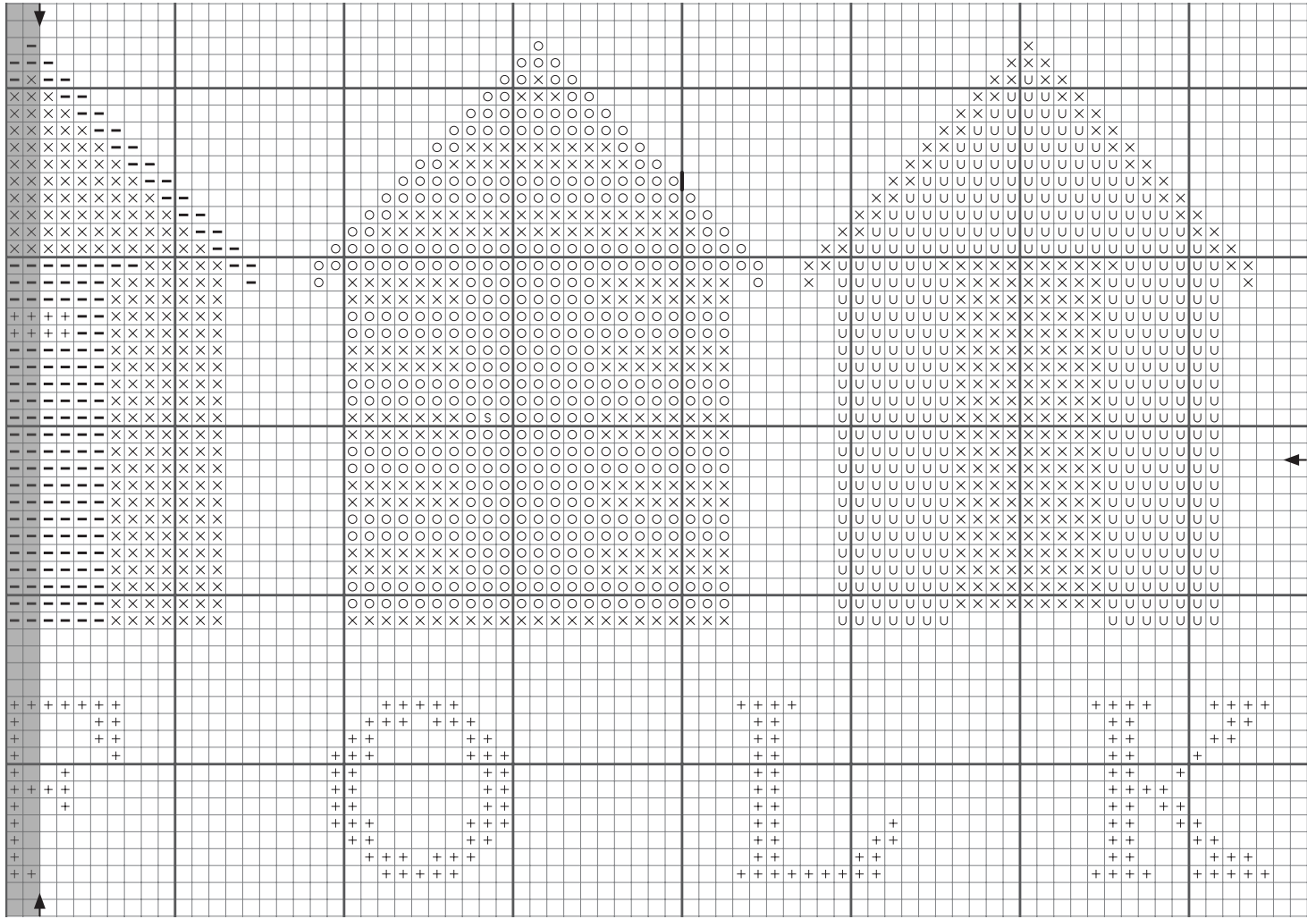
Seaside - Suffolk Beach Huts

Bord de mer - Cabines de plage de Suffolk



Technical chart without backstitch / Tableau de techniques sans le point arrière

Note: Drawing not to scale / Dessin pas à l'échelle



Seaside - Suffolk Beach Huts

Bord de mer - Cabines de plage de Suffolk

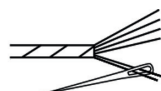
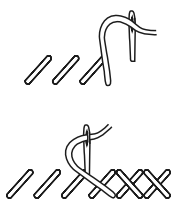
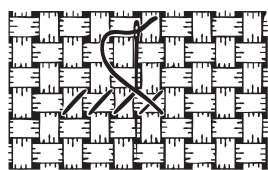


Instructions

Tool Kit / Fournitures

Needle / Aiguille (no.12)
DMC Mouliné Spécial ART 117
Fabric / Toile*

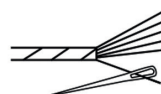
Cross Stitch / Point de Croix



Use 2 strands / Utiliser 2 brins*

Symbol Symbole	Colour Couleur	N° of skeins N° d'échevettes
	3865	x 1
	951	x 1
	153	x 1
	224	x 1
	3740	x 1
	336	x 1
	939	x 1

Backstitch / Point arrière



Use 1 strand / Utiliser 1 brin*

Symbol Symbole	Colour Couleur	N° of skeins N° d'échevettes
	166	x 1
	3740	included above inclus ci dessus
	349	x 1
	336	included above inclus ci dessus
	939	included above inclus ci dessus
	310	x1

*Number of strands and skeins calculated for about 36.5x13.5 cm and 14 or 16 count aida
Nombre de brins et d'échevettes calculé pour 36.5x13.5 cm et une toile Aida 5.5 ou 6 pts/cm